

top of the hill



HOME COMING

Kaleidoscope of MEMORIES

Homecoming activities kicked-off in October with all the traditional student activities, including the famous Hilltopper Serenades, pep rally on Hoge Quadrangle, Saturday morning parade and the annual Homecoming Dance.

But Homecoming also offers alumni and friends a chance to reconnect on the Hilltop. These special events began with a festive Friday evening Benefactors Gala at nearby Stratford Springs. President Circle donors enjoyed a great meal, socializing and a surprise appearance by the Marching Hilltoppers in their new uniforms as the band paraded through the door giving diners a musical treat!

Also special to the 2013 Homecoming was the observance of the 75th Anniversary of the Dental Hygiene Program. Dental hygiene alumni gathered at Wheeling's White Palace for continuing education offerings and marked this meaningful milestone in a variety of ways, including a tour of the soon-to-open Campbell Hall Dental Hygiene clinic.

But for many alumni, the best Homecoming event is the

tailgate before and during the football game, offering Toppers a chance to relax, meet old friends and make new ones as they relive their college memories just before kick-off. During the game, juniors Myron Jellison, Quaker City, Ohio, and Camille Bernabei, Weirton, W.Va., were picked as the new King and Queen.

But perhaps the most meaningful moment of the weekend was when the Alumni Association added the names of three distinguished graduates, Charlie Annett '66, Weston, Fla.; Don Bruno '52, University Park, Fla. and JoAnne Monfradi Dunn '78, Patterson, N.Y., to its Wall of Honor at a ceremony and breakfast held in the Gary E. West Event Center. Their family and friends joined them for the affair and learned what it meant to be Forever Hilltopper!

"These alumni excel in their professional fields and give back to the University in many ways. We congratulate our 2013 honorees and thank them for joining us for Homecoming," said Alumni Director Shane Stack '10.

Homecoming Queen Camille Bernabei
and King Myron Jellison



REFER A STUDENT

Refer a student you know to our
ADMISSIONS OFFICE
so they too can benefit from a
GREAT EDUCATION and
become a
FOREVER HILLTOPPER!

Admissions information is easy to
access by calling,
304.336.8076 or **1.866.WESTLIB**
or emailing
admissions@westliberty.edu.

SAVE the DATE

APRIL 4-6, 2014
Florida Alumni Chapter Reunion
Marriott Resort on Hutchinson Island, Stuart, FL
Call 304.336.8888 for more information

OCTOBER 11, 2014
Homecoming 2014 - WLU v. Fairmont State

UPDATE YOUR CLASS NOTES:
www.westliberty.edu/alumni/class-notes



From left, creative arts therapy students, Azia Goolie, Megan Adams and Megan Velas, meet with Professor Brian Fencil in the art department.



healing through ART

"West Liberty University is the only institution of higher education in the state to offer the undergraduate degree in creative arts therapy. I thank the faculty and administrators who worked hard to make this signature program a reality," said President Robin C. Capehart at the announcement of the approval of the Bachelor of Science in Creative Arts Therapy degree.

Dean of the College of Arts and Communication Dr. William Baronak guided the academic plan approved this past August.

"We anticipate great interest in the program and have had many student inquiries into this major," Baronak said. The new program wouldn't have come to fruition without the support of the Schenk Foundation, which provided the grant that fueled the new degree.

"The Schenk Foundation, along with an academic planning team worked together to make the degree a reality and we are grateful for their support of higher education and West Liberty University," said Angela Zambito-Hill, director of development.

Art Professor Brian Fencil also was involved from the early stages of the new degree development, providing curriculum guidance and recruiting for the new major.

"We are excited to reach full degree status and look forward to enrolling more students interested in this field," Fencil said. "Our first class is very happy."

Besides providing another valuable educational program for students, the creative arts therapy major will benefit the community through student projects and internships, as well as the preparation of future employees in the mental health industry, according to Fencil.

Art Therapists work with a variety of populations including at-risk children, adolescents, adults, and seniors; people with addictions, emotional, developmental, mental and physical health challenges. Children with autism and autism-spectrum disorder have unique learning and social needs that can find expression through art. Graduates of the program will be prepared to enter a master's program and become fully licensed by the American Art Therapy Association.

SPORTS FALL '13 HIGHLIGHTS



FOOTBALL

- A promising start ended in a disappointing finish for the football team, which fell short of the .500 mark for only the second time in Coach Roger Waialae's 9 seasons.
- Senior kicker Bryan Arbes finished second in the nation with a school-record 19 field goals while junior punter Griff Yocum averaged a school-record 41.5 yards per punt.



SOCCER

- Coach Barry Christmas's women's soccer team celebrated the opening of the West Liberty Soccer Complex with a strong second season.
- Courtney Webb and Janice Johnson were second-team All-MEC picks with Webb being named to the MEC All-Freshman Team.



TENNIS

- Coach Heather Gallagher's women's tennis team were MEC runners-up, finishing the fall ranked No. 47 nationally and No. 4 in the Atlantic Region.
- Raissa Wischi and Lauren Howard were first-team All-MEC selections with Raquel Cabero and Emily Dawson earning second-team honors.



CROSS COUNTRY

- Coach Eric McLaughlin's men's and women's cross country teams impressed at the MEC championships.
- The women finished third with three second-team All-MEC picks in Leah Figurski, Alexis Virtue and Elena Romanek.
- The men finished fifth with Andrew Lowery picking up a second-team All-MEC spot.

CHRIS CARDER '72

Executive Director, WLU Foundation

Wheeling resident and native Christine “Chris” Carder was named as executive director of the WLU Foundation last spring.

“I’m a firm believer in supporting the University and its efforts and I’m happy to take on this role and assist the Foundation in reaching its goals,” she said. “I’ve always been grateful to WLU for the education I received and the many leadership skills I learned here. It’s nice to be able to give back.”

Prior to this position, Carder had a long career in education with Ohio County Schools, serving in a variety of roles over 38 years. During that time, she was a teacher, an assistant principal and a vocational director. She ended her first career as principal of Wheeling Park High School, which enrolled approximately 1,800 students at the time.

Chris, or Kiki as she was known when she was a West Liberty co-ed, earned her undergraduate degree in health and physical education and went on to earn a master’s in communication and a second master’s in educational administration, both from West Virginia University.

Her hobbies include following Hilltopper athletics and playing golf. She also enjoys time with her grandson, Leo. She is the mother of two sons, Carl, Chandler, Ariz., and Eric, deceased.

A former member of the Foundation Board, she wants to continue to cultivate donors, stewardship and giving, in order to support, strengthen and sustain the University’s important work.

“This edition of Top of the Hill honors our numerous benefactors who continue to support the University through their generous giving,” she said. “Hopefully it inspires other alumni to give back and join our efforts.”

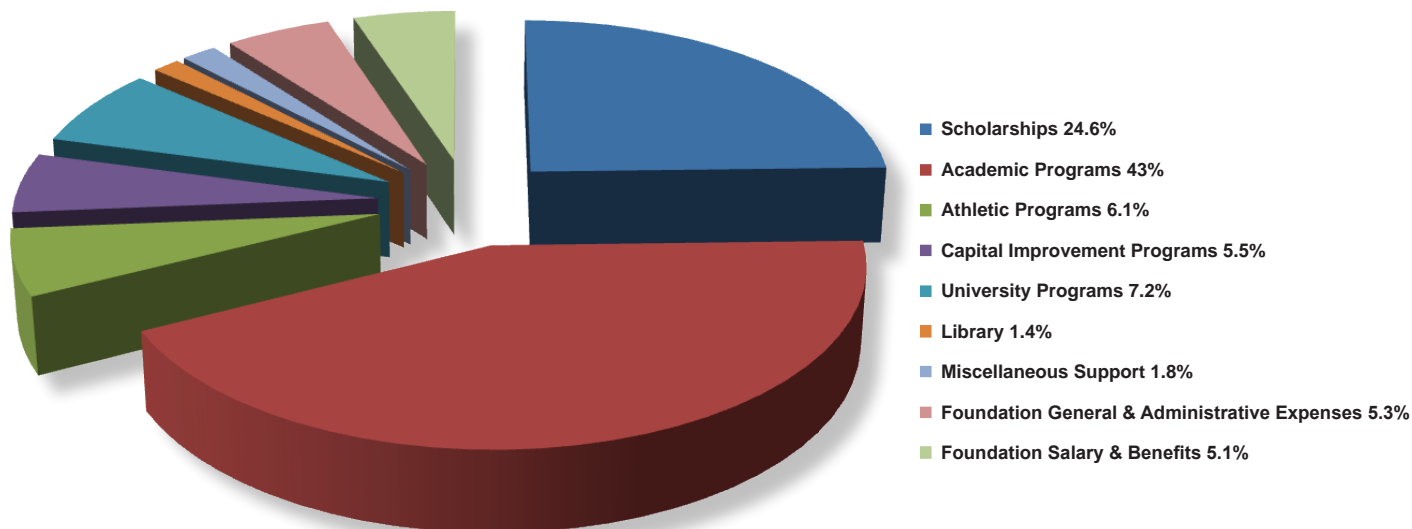
For more information, please contact Carder at 304.336.5635 or at chris.carder@westliberty.edu.



UNIVERSITY SUPPORT & EXPENDITURES

FOR YEAR ENDING JUNE 30, 2013

\$2,292,000 Total Support & Expenditures



Scholarships AWARDED FOR ACADEMIC YEAR 2014

Alfred R. de Jaager Choral Scholarship Endowment	Jack D. Grewell Scholarship	President's Scholarship
Andrew & Linda Pasden Business Scholarship	James G. Marsh Memorial Scholarship Endowment	Project BEST Endowed Scholarship
Bessie Anderson Education Honors Scholarship	Jeff Severns Baseball Scholarship	Robert Godfrey Accounting Scholarship Endowment
Caldwell Scholarship	Jeri Dailey Mathematics Scholarship	Robert L. & Nancy C. Loew Memorial Scholarship
Catherine H. Dorer Endowed Dental Hygiene Scholarship	John C. Shaw Scholarship	Sargent Dental Hygiene Scholarship Endowment
Collegiate Alumnae of Wheeling Scholarship	John W. Carenbauer Baseball Scholarship Endowment	Schnitzler/Hartenstein Scholarship
Cory Hewitt Memorial Scholarship	Joseph A. Bartell Memorial Scholarship Endowment	The Louis & Sandra Berkman Foundation Scholarship
Don L. Seamon Memorial Nursing Scholarship	Kenneth Harris Scholarship	The Performing Theatre Artist Scholarship
Donald & Mary Anne Bruno Scholarship	Kenneth P. Wright Scholarship	Valerie Renee Callas Scholarship Endowment
Donald L. Pahl, Sr. Music Scholarship	Laurence P. Williams – Sternwheel Foundation Scholarship	Vernon D. "Mike" Riemer Memorial Scholarship
Dorothy Long Nursing Scholarship Endowment	Maria Cigalle-Sontag Endowed Scholarship	William S. & Lee Weeks Abraham Endowed Music Scholarship
Dr. E. J. Joseph Dental Hygiene Scholarship	Martha Hudson Goodrich Scholarship for Education Majors	WLU Alumni Homecoming Queen Group Scholarship
Dr. John P. McCullough Business/Athletic Scholarship	Mary K. Ahrens Scholarship Endowment	WLU Baseball Scholarship
Eastern Ohio Dental Society Honor Scholarship	McCarroll Family Trust	Women's Basketball Scholarship
Eileen M. Reinbold Graphic Design Scholarship Endowment	Meagel Scholarship	Women's Tennis Scholarship
Elbin Scholarship	Molly Kiger Coulling Endowed Scholarship	Zack Amedro Scholarship
Foundation Scholarship	Nick Baker Scholarship	ZEFC Scholarship
Gary E. West College of Business Scholarship	Niekro/Kovalick Scholarship	Zeno, Pockl, Lilly and Copeland, A.C. Accounting Scholarship
Golf Scholarship	Pallottini Memorial Scholarship for Outstanding Professional Promise in Dental Hygiene	
Hazel Jane Gilleland Scholarship		
Hoop Club Scholarship		

Scholarship RECIPIENT HIGHLIGHTS

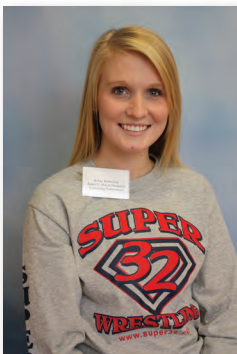


JESSICA TRUAX

BESSIE ANDERSON EDUCATION HONORS SCHOLARSHIP

The Bessie Anderson Education Honors Scholarship was established by the Miller Family Fund through the Community Foundation for the Ohio Valley, Inc. in 2000, in memory of Bessie Margaret Anderson who was born in Steubenville, Ohio in 1912. Bessie graduated from West Liberty State College, which was a Normal school at that time, in 1932. She taught in Brooke and Hancock counties.

Recipients must have a minimum high school GPA 3.5, entering as a full-time freshman with declared major in education, must be a West Virginia resident, qualify for financial aid and provide letters of recommendation from two high school teachers.



KELSEY ROBERTSON

THE JAMES G. MARSH MEMORIAL SCHOLARSHIP ENDOWMENT

The James G. Marsh Memorial Scholarship Endowment was established in 1999 by his wife, Phyllis Marsh. Marsh grew up on a farm on McAdoo Ridge near Wellsburg, W.Va. His parents and extended family instilled in him a strong work ethic, a love of West Virginia, and a responsibility to others. He received his degree in physics in 1960 from West Liberty State College. He taught high school in Follansbee, W.Va, for one year before enrolling in West Virginia University where he earned a master's degree in physics.

The recipient must be entering with declared major in math or science, including pre-engineering, or in science or math education, be state residents, qualify for financial aid, have demonstrated aptitude in science and/or math as supported by letter of recommendation from high school math or science teacher and have strong work ethic.



ANGIE'S HILL

Angela Zambito Hill, Director of Development

It's time for gift giving and sharing the spirit of the season with the ones you love.

Many alumni and community members have given gifts to West Liberty University because of their love for the University and I have the pleasure of helping them share these meaningful gifts.

During 2013, donors gave gifts to support projects to advance the University or impact the students we serve. Alumni chapters joined together to do something meaningful as a group. Many donations came in memory or in honor of a beloved friend or family member. These acts of goodwill and generosity are what the season is all about.

The following pages recognize the generous individuals, corporations and foundations who contributed to the WLU Foundation during fiscal year 2013. I'm proud to report that

there are 1,397 names listed in our honor roll. Thank you!

If you are considering a gift this fiscal year, there is an envelope within this publication for your convenience. You may also visit our website at www.westliberty.edu or call me at 304-336-8490.



FOR A COMPLETE LISTING OF SCHOLARSHIP RECIPIENTS: westliberty.edu/toth/scholarships



CASSANDRA NOWERY

DR. E.J. JOSEPH DENTAL HYGIENE SCHOLARSHIP

The E. J. Joseph Scholarship was established by the late Dr. Michael Joseph to honor the memory of Dr. Edward J. Joseph, who, through his professional dedication, gave unlimited encouragement and counsel to young men and women. He was continually striving to raise the professional standards of dentistry and dental hygiene.

Awarded to a first year dental hygiene student (West Virginia residents only), selected by their classmates, this scholarship relies on student input. Each member of the class nominates one scholarship recipient from among those eligible. The names of the three top nominees are then placed on a ballot for class voting and the student collecting the most votes becomes the scholarship recipient.



MYRON JELLISON

JOSEPH A. BARTELL MEMORIAL SCHOLARSHIP ENDOWMENT

The Joseph A. Bartell Memorial Scholarship Endowment was established in 1981 to honor Joseph A. Bartell, Ph.D., who served West Liberty State College from 1933-1971 in many capacities, including coach, athletic director, professor, dean of men and dean of students. He had a positive impact on the lives of students, faculty and staff. This scholarship is a tribute to his dedication to the University and to his legacy of high goals in athletics and academic achievement.

The recipient must be in good academic standing, must be nominated as a sophomore or junior to receive the award as a junior or senior, participate in extra-curricular activities and at least one year of varsity athletic competition at WLU.



MAGGIE STARR



WEST LIBERTY UNIVERSITY FOUNDATION

BENEFACTORS REPORT

JULY 1, 2012 THROUGH JUNE 30, 2013

MESSAGES FROM THE FOUNDATION CHAIR AND THE UNIVERSITY PRESIDENT



LES DEFELICE
Foundation Chairman
West Liberty University

Dear Friends of West Liberty University:

On behalf of the West Liberty University Foundation Board of Directors, it is my distinct honor to thank you for your generous and ongoing support of West Liberty University in the Fiscal Year July 1, 2012 through June 30, 2013.

West Liberty University is in its \$22 million Capital Campaign for a Great University and your past, present, and future donations to this campaign are greatly appreciated. Thanks to your generosity, Campbell Hall is scheduled to open in 2014.

More than ever in an extremely competitive world, higher education is paramount for the success of our youth in the region and for generations to come. Often, the only available avenue for higher education is scholarships.

Over the next 20 years, \$10 trillion of assets will be in transition between generations. Over the next 20 years our region is expecting a burgeoning energy economy and new businesses created to serve that economy.

Your generosity in contributions today and endowments for the future play a critical role providing education and a positive impact on thousands of lives.

Sincerely,

A handwritten signature in blue ink, appearing to read 'Les'.

Les DeFelice



ROBIN C. CAPEHART
President
West Liberty University

Dear Friends and Alumni of West Liberty University:

Higher Education is at a crossroads. The cost of Higher Education is skyrocketing, students are graduating with record loan debt and state institutions are cutting back on funding. At West Liberty University, we are not immune to these changes. For the budget year 2014-15, the state of West Virginia estimates that it will fund less than 19% of our total operating budget.

However, because of strong commitment from our alumni and friends, we have managed to keep our quality education alive and well. This is the "Power of Giving" and I say THANK YOU.

Private dollars sustain our mission and grow enrollment by supporting the creation of new programs and facility upgrades to attract quality students. Private dollars enhance the educational experience for our students by helping us attract good faculty in a competitive job market. Private dollars enable students from all economic backgrounds to find opportunity on the Hilltop through scholarship funding.

Thanks to your help, many advances were made during fiscal year 2012-13. Here are some highlights:

- * Seven straight years of enrollment growth
- * New majors, programs including Graphic Narrative, Creative Arts Therapy, Athletic Training
- * Third consecutive trip to the Division II "Elite Eight" by our Men's Hilltopper Basketball Team
- * Bloomberg Businessweek ranks WLU with the highest ROI among regional colleges, universities

With sincere appreciation,

A handwritten signature in blue ink, appearing to read 'Robin C. Capehart'.

Robin C. Capehart

STATEMENT OF FINANCIAL POSITION

WEST LIBERTY UNIVERSITY FOUNDATION, INCORPORATED STATEMENTS OF FINANCIAL POSITION JUNE 30, 2012 AND 2013

	2013	2012
	In thousands	
ASSETS		
Cash and cash equivalents	\$ 1,361	\$ 664
Unconditional promises to give	172	561
Other receivables	9	32
Investments at estimated fair value	10,561	10,103
Beneficial interest in perpetual trust	2,098	2,026
Other assets	44	44
TOTAL ASSETS	\$ 14,245	\$ 13,430
LIABILITIES AND NET ASSETS		
LIABILITIES		
Accounts payable and accrued expenses	\$ 21	\$ 45
Liability for charitable gift annuities	61	65
Total liabilities	82	110
NET ASSETS		
Unrestricted	1,936	1,838
Temporarily restricted	2,807	1,785
Permanently restricted	9,420	9,697
Total net assets	14,163	13,320
TOTAL LIABILITIES AND NET ASSETS	\$ 14,245	\$ 13,430

KEY MEASUREMENTS AND CALCULATIONS (in thousands):

	RESULT	CALCULATION
Total Foundation Expenditures stated as a % of Total Assets under Mgt.	1.6%	\$237/\$14,245
Ratio of Total Contributions to Total Foundation Expenditures	7 to 1	1,764/\$237
Ratio of Total Contributions to Total University Support Expenditures	.86 to 1	\$1,764/\$2,055

(To view the audited Financial Statements, Notes, and the Certified Public Accountant's opinion thereon, please go to the www.westliberty.edu/institutionaladvancement.)

STATEMENT OF ACTIVITIES

WEST LIBERTY UNIVERSITY FOUNDATION, INCORPORATED STATEMENTS OF ACTIVITIES AND CHANGE IN NET ASSETS FOR THE YEAR ENDING JUNE 30, 2013

	2013	2012
	In thousands	
	Total	Total
SUPPORT AND REVENUES		
Contributions	\$ 1,764	\$ 1,166
Interest and dividend income	283	302
Loss/Gain on investments	939	(336)
Fundraising	21	42
Change in value of split interest agreements	65	(104)
Other income	64	55
TOTAL SUPPORT AND REVENUES	3,136	1,125
EXPENSES AND LOSSES		
West Liberty University support:		
Scholarships	563	689
Athletic programs	140	80
Academic programs	986	968
Capital improvements	127	47
Other programs	239	356
Fundraising		
General and administrative	237	198
TOTAL EXPENSES AND LOSSES	2,292	2,340
CHANGES IN NET ASSETS	844	(1,214)
NET ASSETS AT BEGINNING OF YEAR	13,320	14,534
NET ASSETS AT END OF YEAR	\$ 14,164	\$ 13,320
RETURN ON AVERAGE NET ASSETS EMPLOYED DURING FISCAL YEAR END JUNE 30, 2013	9.7%	\$1,372/ \$14,164
Net Investment Income:	Total Support & Revenue	3,136
	Less: contributions	1,764
	Net Investment Income	1,372
Average Net Assets	13,742	(\$13,320+\$14,164)/2

NATHAN SHOTWELL SOCIETY



The Nathan Shotwell Planned Giving Society, established in 1997, recognizes and honors those who have made provisions for West Liberty University through a bequest in a will or other estate-planning arrangement. The Society is named for the Reverend Dr. Nathan Shotwell, who founded the institution in 1837 and served as its leader until 1854. Dr. Shotwell is credited with the establishment of the high academic standards to which the University continues to aspire.

The following alumni and friends of West Liberty University have made such provisions:

Anonymous (19)	Gloria E. Gasser '80	Kathryn T. Neuman+
Mary K. Ahrens+	Edward C. Gaughn+	Mary Jane Norona '49+
Judith Schryver Azallion '99	Hazel Jane Gilleland+	Diana Duncan Ott '60+
Donna Waugh '65 Berlage & Bruce L. Berlage*	John D. "Jack" Grewell '34+	Andrew Paesani, Jr. '54*
Patricia L. Bethel '79	Chester P. '47+	Judith Bartell Paesani '55*
Mildred Kaetzel Biggs+	Rose Grossi	Andrew J. Pasden, Jr. '69*
Albert M. Blatnik '49+	Robert P. Haas '57	Linda L. Pasden*
Thais F. Blatnik '76	Kenneth Harris '37+	Karen D. Rea '65
Elizabeth M. Boger '43+	Constance H. Hein '81*	Phillip S. Rea '65
R. Emmett Boyle*	Harry R. Hein*	Carol Jean Reuther
Donald S. Bruno '52*	Howard Herrington '66+	Richard & Sandra J. LaPosta '64 Riopelle
Robert J. Burke '76+	Helen (Gibson) Herzler+	Mary Jane Reaney Ritson '45
Neva Caldwell '22+	Ralph E. Herzler, Jr.+	Barbara C. Robinson
Clyde D. Campbell '53*	John William Hoppers '63*	E. Kent Robinson '61*
Joan L. Campbell '62*	David Jones '60+	Ronald L. Robinson '53
Leah Gracey Campbell '39+	David B. Kadar '74	Sam K. Rollins '68
Richard H. Carter	Miriam E. Kaiser '29+	Esther Rowe+
Audrey Ciripompa*	Billy E. Keller '70	Ruth Ann Scherich '51
Lula K. Collins+	Bob '67 & Patti Kota*	Sara H. Schnitzler '49+
Sharon Murphy Coote '69	Rachel Katherine Krinke '45+	Howard Shackelford '73
C. Nolan Cox '71	John P. Larch '80	Peter M. Sontag '69*
Naomi Craig+	Meta M. Lasch '76	Rebecca B. Stevenson*
Dennis L. Daugherty '76	Howard G. Lemasters '49+	Richard G. Stevenson, MD*
Joseph E. Davis '61	Theresa J. Lemasters '48	Cynthia L. Stickley*
Les DeFelice '76*	John P. Liptak '80	Blanche Barte Stidd
Alfred R. de Jaeger*	Virginia M. Lutes+	Carol Kirsch Terry '74
Richard Deenis '89	Kathleen A. Maestle '93*	Richard F. Terry, MD '68*
Roger Dubois '53*	Helen Kimble Maier '48	Thomas E. Terry '75
Helen P. Elbin+	Rita M. Masur	B. Ann Thomas
Paul N. Elbin+	Catherine C. Mattingly '62	Nancy Crow Trentini*
Carlyle D. Farnsworth	Daniel N. Maxwell '31+	Le Roy A. & Eve L. '70 Wallin
Robert Richmond Fisher	Marilyn A. McCain '72	Joan M. Watkins '65
Carol L. Flaherty '66	Irene Meagel+	Carol F. Webster '77*
Dennis K. Flaherty Ph.D. '67	Virginia T. Mellott '43*	Flip West*
Susan M. Fowler '73	Stella Caravas Misoyianis '52	Gary West '58*
Sara Jane Fritz '43+	Jenny Lynn Morlan '81+	Mary Ann Wolf+
Rosemary M. Front+	R. Clark Morton '53*	Elizabeth Wolf
Carolyn Sue Garrison '64	Dr. Theresa Nagy '68	
Richard D. Garrison '59	Florence Irene Nesbitt+	

+Deceased

*2012-2013 President's Circle member, leading annual benefactor of WLU

HONOR ROLL OF DONORS

The West Liberty University Foundation, Inc. is pleased to report that during the 2012-2013 fiscal year, 2,518 gifts totaling \$2,209,928 were received to advance the mission of the University. During this reporting period, West Liberty's President's Circle, which is comprised of those who contributed \$1,000 or more, consisted of 184 members. President's Circle members provided a total of \$1,936,546 in private funding to the Foundation.

The following pages honor those who supported the mission and vision of West Liberty University.

1837 SOCIETY – PLATINUM CIRCLE

\$100,000 OR MORE

Gary '58 & Flip West**

1837 SOCIETY – SILVER CIRCLE

\$25,000 - \$49,999

Rachel Katherine Krinke '45 Estate
Mary Jane Norona Estate
State of West Virginia - Higher Education

1837 SOCIETY

\$10,000 - \$24,999

Anonymous (1)
Jack C. Adams '63**
Donelda J. Godfrey
Virginia T. Mellott '43**
Thomas '70 & Eileen Reinbold
Peter M. Sontag '69**
Fred & Joan Stamp
Terry '67 & Karen Younkings**

THE WINDING ROAD SOCIETY

\$5,000 - \$9,999

Charles R. Annett '66
R. Emmett Boyle & Debra J. Boger**
Louis '65 & Darlene '61 Cardamone**
Charles '57 & Madona Davis
Alfred R. de Jaeger**
Ben & Lynne Exley
Brian & Rachelle Harlow
Harry & Constance '81 Hein**
W. Peterson & Jean Holloway
H. R. Bucky '64 & Joanne Kopf**
Kathryn T. Neuman Estate
Phil & Wendy Polack
Albert '80 & Susan Roszczyk
James Taibi '86 &
Kristina Williams '86**
Randy & Betty Worls**
William C. Wright '64

ACADEMY SOCIETY

\$2,500 - \$4,999

Marty '75 & Patti '76 Adams**
James & Kristina Bacca

Betty Blum
Donald '52 & Mary Anne Bruno
Joseph D. Clark '64**
Mark D. Crow
John '78 & Kimberly '77 Dolan**
Martha Hudson Goodrich '44**
Edward G. Grimes '71
James '12 & Dawnetti '87 LeMasters
Harry & Helen '61 Ludeman**
Philip '64 & Sharon Stahl**
Robert A. Villamagna
James S. Wilson
Mary Ann Wolf Estate
Randy & Betty Worls**

HILLTOP SOCIETY

\$1,000 - \$2,499

Anonymous (1)
Anissa Anderson '93
David '70 & Barbara '70 Beck
Allan M. Bedashi
Bruce L. & Donna Waugh '65 Berlage
Tom & Jane '63 Bland
John R. Bonassi '69**
James E. Borst '71
Kenneth E. Caldabaugh '92
Clyde '53 & Joan '62 Campbell**
Robin & Saun '97 Capehart
Larry '68 & Cathy '68 Carpenter
Thomas A. Cervone '75**
Audrey Ciripompa**
Robert E. Clark '00
Richard '59 & Mary Jane '57 Copeland**
George Couch
Kenneth D. Cover '65**
Jeffrey '86 & Mariann '84 Davis
Leslie DeFelice '76 & Connie Nelson
Shirley Ann Dietz**
Roger L. DuBois '53**
Margaret Ewing
Nicholas & Fran Frank
Glenn '65 & Eula Fresch**
James '61 & Carol '60 Frum**
Richmond W. Glover '63
Joseph N. & Kathleen '76 Gompers
Timothy & Anne Gompers**
James P. Gribbin

John '75 & Lynn '73 Hellstern
James Hetherington '51**
Bill & Susan Hogan**
Janet L. Honecker
John William Hoppers '63
Fred & Audrey Horne**
Thomas F. Howley '58
Gerald '60 & Shelby-Jean '60 Huffman
Mike & Patty Hughes
Willard Jacobs '68
Daniel '75 & Deborah '75 Joseph**
John & Joan Kepner
Jeff & Linda '90 Knierim
Jason & Sarah Koegler
Anna Mae Koehler '58
Bob '67 & Patti Kota
Melinda S. Kreisberg
Robert & Melinda Kreisberg
Howard & Wendy Long
Richard A. Lucas '86
Kathleen A. Maestle '93**
Donald H. Manley '82
E. Robert & Toni Jo '91 Marks
Henry R. Marockie '61
John P. McCullough**
Samuel '68 & Marian McCullough
David '95 & Meredith McKinley
Thomas T. Mendenhall
William '75 &
Georgeann '81 Mercer**
Vince '62 & Kay '97 Monseau
Charles E. Monticello '78**
R. Clark '53 & Patricia Morton**
Norman B. Moyes '53**
Don Muhleman '71
Frank Muzopappa '58**
Stephen C. Newsome '74
Kimberly Nuzum-Lawrence '75
Andrew '54 &
Judith Bartell '55 Paesani**
Augusto '61 & Joan '61 Paglialunga
Roger Parsons '70
Andrew '69 & Linda Pasden**
Joe Pelaez
Barbara Pace Porter '61**
Gary Powers '74
Fred '63 & Karen Principe

Jerry '60 & Connie '57 Roberts**
David L. Robertson
E. Kent '61 & Barbara Robinson**
Lynda Ruckman '79
Reynold & Jody Scarnecchia
Samuel L. Seamon
Kenneth & C. Emmajo '56 Shearer**
Vincent '64 & Linda Shimp**
Floyd Shuler '64
Bernadette Smith
Melvin '62 & Sondra Sorkowitz
James '51 & Audrey '52 Stepp**
Richard & Rebecca Stevenson**
Cindy Stickley**
Jim & Charlene Stultz
Jennifer Lee Takacs '95**
Richard '68 & Mary Jo Terry
Nancy Crow Trentini
Richard Truex '70
Thomas & Karen '78 Tuttle
Christopher Voyiatt '87
Arthur & Carol '77 Webster**
Norman C. Winters**
Annie P. Wise '72**
Marjorie Wolf**
Jack & Hall Wright

TOWER CLUB

\$500 - \$999

Bill Abraham
Kenneth Allen
Faye Argentine '72
Michael Aulick
Thomas '64 & Patricia '64 Baird
Nick & Rowena Baker**
Stephen '84 & Jennifer '85 Bohach
Fred & Carol Booth**
Richard H. Carter
Fred T. Chambers '64**
Nancy B. Christman '63**
Jim & Diana Crutchfield
Michael Di Clemente '71**
Joanne Dunn '78
Samuel & Mildred '52 Engel**
Rosemary M. Front Estate
James C. Gardill '68
Kathy Guatteri '86

**denotes 10 years of consecutive giving

HONOR ROLL OF DONORS, CONTINUED

TOWER CLUB

\$500 - \$999 *continued*

Richard & Pamela Herndon
 Robert '64 & Cheryl '78 Joseph**
 Scot '96 & Deborah '92 Kiggans
 David R. Klug '74
 Bill '71 & Debby Koegler
 Christine Larsen '72
 Victoria L. Lavorini '12
 John A. Lovrak '69**
 Robert L. Lynch
 Richard Kent '53 & Ruth Markwell**
 Jeremy C. McCamic
 Lori Ann McConaughy '77**
 Cindy McGee '90
 Thomas G. McQuain '75
 John Stimmel &
 Jo Lynne Nugent-Stimmel '75**
 Edward M. Pastilong
 Phil '65 & Karen '65 Rea**
 Steven & Susan Russell
 William P. & Jane Atkins '63 Sargent**
 Gail H. Schmalz '52
 Robert '58 & Jeanne Schramm**
 Shirley A. Seamon
 Terence A. Shimp '68
 George Smith '68
 John Edgar Smith
 William M. Smith
 John B. Stavovy, Jr. '70
 Anne E. Stephens '69
 Denny Stewart '68
 Laurel Stollar '92
 Moundsville Baptist Church -
 Emmanuel Class
 Virginia B. Taylor
 Thomas '75 & Brenda '79 Thomas
 H.E. Neumann Co.
 Barbara A. Wall
 The Carol M. & Terry A. Wallace
 Fund for Education
 Diana Walter '90
 Adam & Erika Weidner
 Lawrence & Vicki Wright
 George & Vicki Yocum
 Michael '72 & Carol '71 Young

FOUNDERS' CLUB

\$250 - \$499

Robert K. Abel '73**
 Ruben Addarich
 Lois Agostino
 Keith A. Amacher '75**
 Reid S. Amos
 Thomas J. Babb**
 William Baronak

David '69 & Cheryl Bayne
 Tara M. Beiswenger '88**
 Bianca Benson
 Don & Ann Bopp
 Marguerite Ann Bostonia '74
 Charles Brand '64
 Robert E. Brossman
 Barbara Brown '71
 Peggy A. Brummett '69**
 Harold & Roanne Burech
 Stephen & Raina Burke
 Kay K. Byard '62
 Donna Howe Callar '62
 Jerry J. Cameron '64
 Christine Carder '72
 Joe & Sandy Cartisano**
 Robert & Claire Caveney
 Nancy Jean Charlton '76**
 Richard S. Coe '78
 James L. Comerci, MD
 Joanna J. Cover '70**
 David '89 & Jennifer Croft
 Joseph E. Davis '61**
 Joseph R. Donahue '72**
 Jay M. Duffy '69
 Russell Dunkin
 Richard '64 & Patricia Edge**
 Dave & Mary Ann Edwards
 Glenn Elliott D.O. '72
 Bruce L. Ensinger '76
 William '55 & Phyllis '57 Evans**
 Richard J. Faiello '69**
 Thomas J. Fallon III '86
 Dr. Robert J. Fanning, Jr.
 Peter L. Freeman
 Annette Godown
 Sidney & Bonnie Grisell
 John '70 & Judy '73 Hennen
 Eriks E. Janelins
 David '67 & Alice '67 Javersak**
 Wilbur S. Jones
 Sophia A. Kayafas
 Barbara A. Kegelmeyer
 Chuck '65 & June '66 Knaack
 John G. Kramer
 Sam & Leslie Kusic
 Floyd '60 & Betty '60 Lancia
 Robert & Patricia Levenson
 Paul & Louise Limbert
 Robert J. Lo Castro
 Gary & Janell Loh
 Lawrence E. Lykins**
 Jacqueline Mackey '93
 Michael J. Marshall
 Mario '65 & Chris '64 Mastroianni
 William & Susan '65 McNeil

Andrew J. Mesaros '43**
 Richard Millard
 David W. Miller &
 Peter J. Junkersfeld
 Barbara A. Morrell-Hughes '62
 Maureen H. Munsterteiger '68**
 Toni Murphy
 Ogden & Snookie Nutting
 Joe & Carol Pangilinan
 Jerry L. Pelle
 Parry & Kathleen Petroplus
 Thomas '88 & Kimberly '98
 Puskarich**
 Daniel J. Reeves '65
 Michael S. Robertson '70**
 James & Jenny Seibert
 Sylvia Seften
 Howard L. Shackelford '73**
 Jeffrey Simms '89
 Stella Strickling '75
 Michele R. Sweeney
 Debra Tiano '76**
 Mary Alice Tighe '56
 Pamela S. Timko '73**
 Nancy E. Tirone
 Paul T. Tucker
 Bonnie Vetanze
 Edward & Ruth Voss
 Amy M. Wadas
 Edgewood Evangelical Lutheran Church
 Myles B. Witchey '54**
 Alice Wylie '75
 John '77 & Pamela '76 Zorbini

GOLD & BLACK

\$100 - \$249

Anonymous (1)
 Carole J. Adams
 Charlotte M. Adams '73**
 Jay & Christine '75 Adams
 Philip Adkins
 Betsey Alden '61**
 Judy A. Altilio
 Ed Angel
 Walter Austin '71
 Betty M. Bailey '70
 John P. Bailey
 Gerald Baker
 Kathleen Ballato '74**
 George W. Barnes '73
 Paul & Patricia Baronak
 John M. Barr '78
 Paul D. Bartell '67
 Jamie R. Battista '96
 Zane Baxter '81
 Albert Bazo '59
 Thomas H. Becker '62**
 Jon & Jessica Bedway
 David W. Bixby '74
 Daniel S. Bjelac '82
 Zeke Blake
 Thais F. Blatnik '76
 Colleen Blon
 David Blowers
 David F. Boehm '76
 Bruce '65 & Sandra '69 Bonar
 Patricia Bongiorno '87
 Tamella J. Border
 Bonita Botts '73
 Joseph & Joan Boutaugh
 Dennis M. Bowman '66
 Allan A. Boyd '66
 Robert '63 & Arlene '61 Boyles**
 James L. Bramble
 Loretta J. Brenner '65
 Judith R. Breon '71**
 Joseph J. Brescia '97
 Kenith '02 & Jessica '03 Britt
 David & Amelia Brooks
 John '74 & Katherine '80 Bryson**
 Reed '70 & Beverly '90 Burke
 Peggy Burt
 Nikki Ann Cable '69
 Pamela Cameron '72
 Donald A. Camplese '62
 Mary J. Capehart
 Judy E. Carney
 Harlan & Jeanne Carter
 James & Karen Caveney
 Ann R. Chmielewski '65
 Anita Chops '72
 Harry Chorpenning '58
 Marcia E. Christ '71**
 John O. Cole**
 Theodore '58 & Barbara '58 Collins
 Ernest & Maureen '74 Comiskey '74
 Scott A. Cook '89
 Susan Cook '78
 Barbara B. Cortez '92
 Phyllis Hendershot Costine '49
 Teresa Coursey '70
 Greg Coutts '82
 Linda Cowan
 Brian L. Crawford
 Tyrone Crawmer '74
 Sue A. Crolley
 Brian D. Cross '07
 Dorothy E. Crossman '77
 Patti T. Crunelle '60**
 Paul '63 & Sandra '62 Cunningham
 Richard & Ellen Daleke
 Kenneth '83 & Kathryn '85 Daugherty

Ann Laipple Davis '85**
 Mary Jo Davis-Headley '79**
 Gerald de Jaeger
 Ray DeCola '54
 Richard & Marion Deever
 Rich DeMatte '69
 Joseph '66 & Kathleen '65 Demko**
 Michael A. DeSan '06
 Jo Ann DeWitt '86
 James DiCarlo
 Alan '66 & Lee '66 Dolan
 David '64 & Barbara '64 Dougherty
 Marion H. Drews**
 Kevin & Patty Duffin
 C. James Duke '64
 Susan R. Durig '75
 Sally H. Eberhard '78
 Michele Ellis-Thomas
 David Ellwood
 Shirley L. Emerick '74
 Thomas G. Fadul, Jr. '81
 Carlyle & Sue Farnsworth**
 Donald '76 & Mary '78 Ferda**
 Janet B. Ferree '56
 Leslie R. Fish '70**
 Douglas & Ann Foster
 Charla S. Franke '66
 Jeffrey '83 & Rebecca '71 Freeman
 William J. Freyler '63**
 Michael Fritz '66
 Jack & Cheryl Frost
 Mary M. Furbee '72
 Nick '68 & Susan '91 Fuscardo
 Carolyn S. Garrison '64**
 Dana '72 & Sharon '72 Garten
 Donald L. Gasber '60**
 Karen Gaylord '69
 Nelson & Bonnie '97 Gilbert
 David & Judy '68 Glatz**
 Grace Gossett '56
 Peter E. Graziotto '65
 Audrey Greene '65
 Sally Allen Gruber '58
 William '48 & Dorothy Grubler**
 Becca Gulino '87**
 Judith Osburn Gummere '61
 Gene & Jan Haberman
 Nancy Y. Hall '63**
 Peggy Ann Hansen '52
 John W. Hattman
 Sylvia Herrera
 Kevin '95 & Michelle '96 Higgins
 Tamila L. Higley '87**
 Angela Zambito Hill
 William A. Hill '62**
 Ihor & Catherine Hlohowskyj**
 Kenneth '61 & Linda Hoagland
 Ron Hobbs
 Donald & Jean Hofreuter**
 Robert G. Hores '60

Nancy Howley '58**
 John & Stephanie Hulslander
 Henry M. Hupp '43**
 Matthew & Whitney Inkster
 Frank & Kathleen Jackson
 Michael C. Jebbia '03
 Harold R. Johnson
 Lawrence F. Kaiser '64
 Irene K. Kamin '68
 David A. Kappel
 John '71 & Debbie '72 Karas
 Lourdes Karas
 Charles F. Kazienko '71
 Paula M. Keith '71
 Delmar '74 & Karen '75 Kendo**
 Linda K. Kleinfelder '85
 Beverly K. Knollinger '78
 Vincent '51 & Verna '49 Kordack
 David A. Kraus '70
 Laura Kuhns
 Penn Z. Kurtz
 Rose Kutlenios
 Patricia V. Kutsch
 Gregory A. Lacy
 Evelyn C. Lady
 Roslyn Lando '86
 Sue Hazlett Langmyer '53
 Joseph '01 & Emily '92 Leffe
 Kenny E. Lemasters '83**
 Michael J. Leo '87
 Larry J. Liberto '64
 John P. Liptak '80
 Carol Ann Loew
 Janet Loew '85
 Victoria L. Long '96
 Gerard Lucarelli '72
 Judy Luff '70
 Douglas E. Mack '77**
 Cy A. Macosko '62**
 Doug Macy
 Gerald & Laura Main
 John R. Marchlenski '75
 Edward '63 & Irene '64 Marks**
 Joseph '90 & Dawn '90 Maroon
 Allen Marshall '62
 Mary Massey '73
 Ronald '78 & Michelle '79 Matella**
 J. Ted Mattern '69**
 Catherine C. Mattingly '62
 Frederick McCoy '74
 Roderick A. McCune '96
 Virginia McFarland '03
 Richard T. McGowan
 Linda Jones McKee
 Roger & Jane McLean
 Robert '61 & Judith '61 McNabb
 Johanna H. Meissner
 Raymond & Candice Merkle
 Douglas '70 & Rebecca '62 Merritt
 John '76 & Denise '76 Miller

Janet M. Monsch '58**
 Colleen Moore '50
 David B. Moore '65
 Linda Morrison '84
 Maureen McCaig Murphy '61
 Janet E. Murray '85**
 Rodney J. Mustanski '75
 Betsy Dilly Myer '73**
 Elizabeth A. Narrish
 Howard & Teresa Neibert
 Jay '75 & Suzanne '73 Nelson
 Donna Niess '76
 James Novel '77
 Peter & Judith Oleyar
 Melanie G. Owen '92**
 Paul Padgett
 G. Michael Palmer '65
 Michelle L. Panepucci
 Robert Pascoe '69**
 Lee & June Paull
 Joan Peyton '51
 Deana Pfarr-Taylor '79**
 Megan D. Phillips
 Jo Pilette
 William B. Pillar '68**
 Michael '69 & Cherry '68 Pivik
 Warren Distribution Inc.
 Raymond '65 & Martha '66 Prantil**
 Mark & Jeanie Prince
 Lauren A. Pulay '00
 Rodney '70 & Darlene '70 Reese
 Gary Rexroad
 C. Timothy '69 & Patricia '69 Rhodes**
 Charles Richards
 Brent & Tammy Richmond
 Larry & Jana Rine
 Jane M. Robertson '82
 Mark Alan Robinson '85
 Bob & Anne Robinson
 Michael Romano '72**
 Dwight Romick '60
 Calvino Rossetti '70
 Geoffrey & Rosemary Ruben
 Wednesday Night Bridge Club
 Karen A. Rychlewski
 Philip Salvatori '81**
 Jenny L. Santilli '81
 Pete L. Sapon
 Sharon S. Saseen
 Patricia Schaber '74
 Todd Schambach '87
 Alberta R. Schramm '51
 Peter C. Schuetz '75
 Charlene Seamens '75
 John T. Sedgwick '75**
 Hong Il Seung
 Jo Ann Shaw '81
 Ronald L. Shenk '68**
 Megan Sherwood
 Timothy & Lynn Shetzer

Moundsville Baptist Church -
 Maranatha Class
 William F. Sinclair '79
 Norma Glover Sine
 Larry Skrzypek
 Jeanette C. Slenska '56
 Gary '74 & Anne '74 Smith
 Earl & Emily Sorrell
 Louis & Sharon Spadafore
 Michael J. Spisak '68
 Randall C. & Elizabeth J. Sproull
 Nancy Sprowls '53
 Marjorie Squires '67
 H. Clayton Stapleton '70
 William & Lori Starr
 Janet L. Stetekluh '72
 Mitchel D. Stevenson '74
 Edward W. Stifel, III
 Rebecca Stoffel
 Ted '54 & Mary Ann '56 Stolarczyk
 Ronnie & Debra Sumner
 Douglas J. Suter
 Edward F. Suter '70**
 Jim Swanson
 Chris Swisher '75
 Raymond & Lucille Tackett
 Susan E. Tate '81
 Allen & Bobbi Taylor
 Thomas '75 & Carol '74 Terry
 Rickey D. Thomas '03
 Thomas & Ann Thomas
 Rebecca Thompson '67
 Raymond S. Tomassene
 Frank '66 & Mary Lou Ujcich
 Gilbert C. Ullom '76
 Katherine E. Vani '77
 Ronald D. Vogler '73
 Sam Vucelich, Sr. '59**
 Esther Weeks
 Raymond & Barbara Weiland
 Rick West '97
 Julian Whaley '59
 Jeffrey & Andi '80 Williams
 Denis '75 & Gretchen '73 Wilson
 Ernest J. Winiesdorffer '67
 Scott '75 & Joanne Winters
 David Withers '66
 Brenda K. Womack**
 Michael '68 & Carol '68 Young
 Michael & Patti Young
 Sheri L. Young
 Basil P. Zabek '64
 Donald & Sandra Zeiger
 Debra K. Zien '76**

HONOR ROLL OF DONORS, CONTINUED

FRIENDS

\$1 - \$99

Rodger A. Abramovic '77
 Thomas '59 & Susan Ackerman
 Jules & Cathy Adam
 Debra Agostino
 Galen '75 & Victoria '77 Alexander
 Mary Beth Allan '85
 James & Tracy Allen
 Tim D. Allen '82
 Dorothy Keith Allers '50
 Mark '75 & Chic '75 Allison
 Nadine R. Ambrose '85**
 Mathew A. Amedeo '71
 Suzanne M. Archer '87
 John & Dianne Argoudelis
 Rodger & Patricia Armstrong
 Cathy J. Aston
 Lois Atherton '72
 Frieda Augsburg '64
 John Aulerich
 Stephen P. Austin '70**
 Greg & Eshter Avdakov
 Sue Ann H. Backus '70
 Michael '78 & Jean '76 Bailey**
 Kelli Bailey
 Lynne Bailey '65
 Sharon Ann Baker '76
 Sue Baker
 Todd Baker '91
 Dorothy L. Bales '55
 Constance M. Ball '75
 William & Hazel Barhorst
 Beverly A. Barker
 Irene Barker
 Linda Rose Barney '64**
 Christopher Barrick
 Laura Barry
 Barbara G. Bartnicki '93
 Goldie M. Basil '58
 Louis '96 & Kimberly '81 Bator
 Mark & Vicki Battista
 Frank Baxter '56
 John Beatty '77
 Robert & Gloria Beaver
 Caroline N. Becker**
 Rick & Laura Beight
 Susan G. Berry '70
 Catherine L. Billie '75
 Michael '97 & Charity '99 Blackwell
 Edna M. Blake '60
 Sue Blevins
 Julie B. Blust '02
 Nancy Boan '74
 Joe & Deborah Boczek
 Joseph & Carolyn Bogo

Mark Bohlman '75
 Leo F. Bolden '64**
 Cynthia L. Bonafield
 John S. Bonar '50
 William & Doris Boocock
 Luann Boothe '83
 Olive L. Borchers '69
 Roy P. Boring '97
 Paul & Kathy Boron
 Tama Botizan '75
 Evis E. Bowen
 Jim Bowen '70
 Ed & Kathy '69 Bowman
 Cecelia Boyd
 Jane E. Bragg
 Carol A. Bramble
 Frederick Brautigan '91
 Walter & Shirl Briden
 James '92 & Linda '73 Brinkman
 Darrell & Teresa Brown**
 Joshua & Emily Brown
 Owens Brown '74
 Ryan A. Brown '12
 Hollie Buchanan
 John K. Buchanan '87
 Stephen P. Bucher '71
 Rebecca Bugaj
 Linda Burcham '72
 Cheryl L. Burke '87
 Melinda A. Burkhart '80**
 Donna J. Butterfield
 Patricia J. Byrd '75
 R. Curtis '81 & Christin Byrum
 Salvatore C. Calbone '72
 Robert B. Calmes, Jr. '67
 Linda Jean Cameron '82
 Wayne '85 & Christy '86 Campbell
 Kim '69 & Sandra '69 Carey
 Jamie H. Carmosino '69
 Beth Carp '76
 Ashley Carter
 Ric, Terri, Micah &
 Tannor Chamberlain
 Regina Chancellor
 Linda Chappell '67
 Emmylou Charlton '94
 Fuhua Chen
 Lihua Chen
 Diane M. Cherico '82**
 Roberta A. Chesky '67
 John J. Chiazza '60**
 Clark & Nora Childers
 William & Margaret Christopher
 Norman & Jeanetta Clampitt
 Cynthia M. Clark
 James '74 & Sharon Clark

Jannette V. Clark
 Susan Clark
 Ralph Clause '74
 Janet Clifton '75
 Jay T. Cline
 Patricia B. Clipp '65
 Robert & Mary Cole
 Linda G. Coleman '72
 Nabie Conteh
 Gary '71 & Deborah '71 Cooley
 Jenna Cook
 Chad Corley
 Chuck '66 & Linda '87 Cornell
 Suzanne C. Cousins '63
 Daniel L. Cowden '66
 Robert & Billie Cox
 Robert & Renae Cox
 Michael '78 & Laura '81 Coyne
 Carol L. Crawford '01
 Connie M. Crawford '70
 Patricia H. Creamer
 Jennifer Doane Cross
 John W. Crouch '66
 Craig M. Crow '02
 William & Virginia Crowl
 James Crumbacher
 Peter '88 & Erin Cuffaro
 William G. Culan '71**
 Nancy Cunningham '88
 Mary E. Curia
 Ronald E. Cusick '90
 Sandra E. Czernek
 Rebecca L. Daniel
 Dennis L. Daugherty '76
 Elizabeth C. Daugherty '71**
 Lori Daugherty '90
 Betsy R. Davis '42
 Bridgette Dawson
 Frank B. Day III '81**
 Eugene J. DeCola '50
 Roberta E. DeFrancis '70
 William & Nancy Deibert
 David & Elizabeth Delk
 John Dellavedova '71
 Michael & Denise DeSan
 James '78 & Jane DeSantis
 Paul & Suzanne Diehm
 Paul H. Dimmey '78
 Jessica M. Dixon '09
 Linda Donley '75
 Melanie Ann Donofe '88
 Bernadine Dorich '67**
 M. Kathleen Dougherty
 Beth A. Drossman '84**
 Mary Drudi '64
 Joseph '69 & Julie '70 Dudas

Joseph & Susan Dudas
 Dorothy V. Dudzik '88
 Thomas & Eileen Dugan
 Charles J. Dunaway '73
 Ralph '84 & Tamara '86 Durante
 Wayne N. Earnest '72
 Timothy & Marjorie Easton
 Brett Eckley
 Walda K. Elliott '74**
 Bonnie Ellis
 Dennis & Sharon Emerich
 Jerry & Wanda Emerich
 Edsel '74 & Sherry '74 Emery
 Elizabeth Emeterio '81
 Dale & Gladys Ennis
 Judith Ann Ennis '84
 Sarah E. Eplion
 Carmel A. Esposito '78**
 Clifford J. Everly '71**
 Paul & Hali Exley
 Deborah A. Exten '71
 Nancy S. Eyler '67
 John & Bettie Fadoul
 Millet '00 & Susie '86 Fadoul
 Evelyn Jane Fadul
 Rosibel M. Fadul
 C.J. Farnsworth
 Olan Faulk III '70
 Matthew & Rhonda Feasel
 Frank Ferguson '77
 Jack & Carla Ferrell
 Mark & Patricia Ann '76 Ferrell
 Michael T. Ferro '73
 Mary Jo Ficklin
 Kathy Fielder '60
 Jeanne H. Finstein
 Gloria Fisher '75
 Betty R. Flanagan '50
 Carmen Fleites
 Deborah Folger '91
 Virginia Forker '59
 Susan Forrester '76
 Jackque L. Fowles '74
 Peter W. Fox '70
 Heather L. Frazier
 Ronald & Alice Frazier
 Dr. & Mrs. Adel E. Frenn
 Sharon D. Friend '67**
 Jon Fromhart '71
 Kimberly L. Gable '93
 Mary Gallo '64
 Kenneth Games '70
 Susan Garrison
 James Barry Gasaway '66
 Gloria E. Gasser '80
 Kenneth J. Gavazzi '71

Kerry L. George	Mike & Gretchen Hooper	Richard P. Kroflich '08	Mary Jo McGinley '78
William F. Gersting '70	Judith Hornak '72	Rebecca Krol '75	Jacqueline McGlumphy '78**
David G. Gill '70	John Hosler '71	Thomas Krupica '78	Daniel J. McKeever '70
Carol F. Gillispie '57	Thomas A. Hostutler	Paul & Carol Kruthaup	Kelly L. McKeever '95
Bill '84 & Angel '82 Glitch**	Donna S. Howard	Michelle L. Kuczykowski	Wendy A. McKlevis
Mary "Peggy" Irvine Glowatz '67	Renee Howard '75	Katelyn M. Kumm '11	Charles & Jean McMahon
Keith Goldman '91	Deborah L. Hudak '71**	Barbara J. Laifer '75	F. Wayne & Marilyn McMillen
John & Priscilla Gompers	Michael '79 & Christine '88	Victoria Laird '77	Haley M. McMillen
Mr. & Mrs. Joseph A. Gompers	Hudimac '79	William J. Laird '01	Roger & Carol McMillen
Bertha Gongola '62	Suzie Hudok '79**	William & Mary Lamantia	Darlene Meeker '75
Larry & Lisa Goodnight	Jack D. Hudson '55	Bob & Judy Langkamer	Tom Meikle '61**
David & Karen Gould	Aaron & Courtney Huffman	Keith F. Lawson	Carolyn M. Menard '71**
Erica L. Gracie '05	Courtney Huffman	Janice E. Leith '68	Robert & Sue Mendenhall
Lawrence R. Gress '66	Edward E. Hughes III '74**	Michael '75 &	Daniel & Christine Metz
Georgette Griffith '68	Glenn & Carol Hulslander	Karen '75 Lemasters**	Steven Metz '72
Zane A. Griffiths '62	Roger A. Hupp '70	Ruth Lemley	Edward S. Mihalovich '76
Carol Grum '57	Patricia H. Hutchinson '53	Debra A. Lett '82	Clifford '78 & Sandra '78 Miller
Jeanette Gryskevich '75**	Richard E. Iacono '71	David & Marie Linden	Sharon L. Miller '68
Richard J. Gulan, Jr.	Whitney Inkster	Bernard '70 & Karen '70 Linn**	Elizabeth L. Milligan '95
Gloria Guspyt '71	Glenna L. Isner '72**	Kathryn L. Loparo '57**	Herb '89 & Ashlea '04 Minch
James A. Haizlett	Nadia & Zack Iwanyshyn	Jorge Lorenzo	Scott Minor
David & Jennifer Hanby	Lawrence Jack '78	Louis V. Lucarelli '75	Gust W. Mitchell '64
Ralph & Carol Hanby	Howard & Jenean Jackson	Donna J. Lukich '79**	Mark Mitchell
Matthew Harder	John & Janet Jackson	Robert K. Lundberg '76	John '70 & Brenda '72 Moore
Daniel & Becki Harless	David & Cynthia Jamison	Mary Ellen Lurty '60	Helen L. Moren '84
Judith Harrison '61	Ross E. Jeffers '69	Lillian J. Lutz '55	Richard '74 & Patricia '74 Morhack
Elizabeth Harshberger '80	Charles & Mildred Johnson	Steven Mabbott '79	Clinton L. Moss '70**
Ralph & Kathleen Hart	Robert L. Johnson '83	Judy Mackorell '68	Martha L. Moss '53
Lois Hartenstein Family	Robert & Alma Johnson	Ramona M. MacMillan	Byron & Nancy '67 Moss
Gregory P. Hartmann '70	Rochelle Johnson	Pauline Magoulakis '54	Virginia Mozingo '52
James H. Harvey '52	Tonya Johnson	Nellie Thomas Magyar '50	William & Joan Mudge
Tommy & Sheri Harvey	Stephen A. Johnston '05	Michael '71 & Helen '71 Malandrakis	David & Roberta Murphy
Rebecca S. Hayes '76	Gloria Jones '68	Shane Mallett	Betty Jane Myers '56
Saundra Hayes '75	Brent J. Jorden '11	Leatha A. Malone	Eric C. Neubauer '85
Mark L. Hedrick '82	Jim Jorden	Jean Mann '54	Gary & Theresa Neuhart
Jane A. Heidebach '83	John '85 & Lisa '84 Jorden	Doris F. Manning '55	James C. Neuhart II '63
Jade D. Henderson '03	Michael '68 & Janet Joseph	Janice Irene Manning '72	Barbara J. Neuman
Lou Henger '78	Sharon S. Joseph	Carmine & Sally Marino	Donald & Carol Nichols
D. Michael & Sherry '75 Hennen	Sherry Joy '74	Debra S. Marino '77	Sarah W. Nickerson
Michele Henry	Diane E. Kafana '92	Rosalie Markins '65	Ruth M. Nicol
Patrick J. Henry '83	Kenneth '71 &	Sandra R. Marshall '74	Wilma J. Nienke
Victoria L. Henry	Janice '72 Kasserman	Kay H. Martin	Donald P. Nolte '78
Joseph '72 & Judith '73 Henthorn**	Mary H. Kay '82	Vishakha Maskey	James '74 & Sondra '76 Norman**
Thomas J. Hepburn	Martie Keller '84	Regina Mason '79**	Carl '01 & Stephanie North**
Thomas Heung '74	Mary Lou Kent '72	Anthony R. Massa '09	Christiane M. Novak '91**
Gwenith J. Hightower	Howard Kessler '73	Roger A. Matz	Dennis R. O'Donnell '71
Valerie Hightower	Richard P. Kestermont '70**	Michael J. Mavromatis	James '47 & Dorothy '47 O'Hara
Sharon L. Hinerman-Hall '75**	Gary Kestner	Janice K. Maxson	Jean Anne O'Malley
Travis P. Hinkle '07	Melissa D. Kiehl	Ralph May '78	Jacinda M. Oberdick
James & Sandra Hinson	Clarice Knisley '52	Donald Mayles '62	Jean Och
Kevin R. Hissrich '79**	Woody & Kay Knollinger	Ken & Gay Mays	Mary Kay Olashuk '85**
Charlie & Maria Hitson	Erica Knowlton '88**	Patricia McAllister '70	Russell J. Opipery '63
Chap Holbert '73	Constance H. Knuth '74**	Tammy McClain	Deborah Osborne '76
Elizabeth B. Holden	Marilyn Koehler '60	Roma Lee McConnell '81	Stacey J. Ovies
Doyle & Constance Holfinger	Rita Kolberg '74	Nancy McCord '66	John L. Padgett
John & Joan Holman	Jeff '83 & Holly '88 Kopko	Timothy P. McCormick '74	John '89 & Karla '89 Palotay
Donald & Yvonne Holstine	Michael & Gloria Kovacic	Johnna M. McCullough '86	Thomas '65 & Connie '64 Pannett
Bradford N. Holt '01	Richard & Kimberly Kreitzer	Andrea M. McElravy '79	John W. Pape '61
David Hooper '77	Kenneth '66 & Margery '67 Kriner	Jeanne McGill '72	

HONOR ROLL OF DONORS, CONTINUED

FRIENDS

\$1 - \$99 *continued*

Mary Ann Parker
 Thomas P. Pasco '98
 Richard '69 & Beth '70 Patrick
 Kathy D. Penick
 Gerald & Edith Perry
 Richard Pettit
 John W. Phillips '82
 Harold & Deborah Pickens
 Mark E. Pissos '03**
 Lori K. Poch
 Brianne M. Poilek
 James & Frances Poling
 Gayle L. Poole '72**
 ohn M. Porco '72
 Linda J. Porter
 Betsy K. Porterfield
 Kelly Porterfield
 Nelson & Judy Porterfield
 Bonnie Powell '81
 Martin & Norma Price
 Lora K. Puskar '85
 William & Mary Putnam
 Alan R. Ramsey
 Becky L. Rawlings '81
 Robert J. Reeves '61
 Corey Reigel
 John E. Reilly
 Elizabeth J. Reinhardt '07
 James '73 & Mary '69 Repole
 Florence M. Richards
 Richele A. Richards
 Andy '84 &
 Marilyn '83 Richardson
 Robert W. Rieck '65**
 Charity M. Riley '03**
 Lucille M. Riley
 Patrick W. Riley
 Brent & Angela Ripley
 Albert & Carol Riske
 Bonnie Ritz '75
 Christie Robison '79
 Bernadine V. Rodriguez
 Allan B. Rosenberg
 Fred Rossell
 Marinel Rosu
 Alan & Barbara Ruben
 Barbara J. Ruthers '70**
 Robert A. Sako
 Alex & Peggy Salvatori
 Emma Salvatori
 Maureen T. Sanborn
 William '69 & Linda Sandiford
 Joseph & Jane Sandrick

Carolyn "Cookie" Santilli '58
 Adolph & Lora Kaye Santorine
 Lulu P. Sarris '51
 Gerald & Carla Saul
 Joseph Scarpaci
 Chuck Scatterday
 Jeffrey A. Schlaegel
 Donna Schuler
 Arthur G. Schweinsburg '80
 Melvin & Mary Scurlock
 Tammi Secrist
 Roger G. Seeber**
 Gary & Deborah Seldomridge
 James F. Shaffer
 Edward & Jean Sherman
 Patricia Shiylin '73
 Joyce Siegel '62
 Corinne Sigley
 Ruth Ann Simms
 James & Susan Simpson
 Terry L. Sippin '02
 Steve Skocik '59
 William E. Slack '67
 Olga J. Slenska
 Barbara Sloan '70
 David R. Smith '63**
 Edward & Leandra Smith
 Janice K. Smith '94
 Joyce Smith '66
 Victoria J. Smith '06
 Jesse '04 & Angie '03 Smoulder
 Brittney Sobota
 John '87 & Donna Spadafora
 Jean Ann Spear '58
 Michele Spence '69
 Tomas A. Spiker '70
 Clifton L. Spinner, Jr. '87
 Chuck & Nancy Spohn
 Albert '70 & Dorothy '70 Spolar
 Michelle L. Stack
 Shane '10 & Michelle Stack
 Linda Stankiewicz '73
 Ronald & Jackie Stanley
 Helen I. Starr
 Robert C. Stauffer, Jr.
 Dave & Debby Stauver
 Edward '72 & Patricia '70 Stavovy
 Judith Stechly '78
 Kimberly Stevenson '79**
 Mary C. Stiltner
 C. Paul & Kristine Stocker
 Suzann M. Stoehr '65
 Patricia A. Stough '78
 Martha L. Strasser
 Mary W. Summers '78

Greta J. Swann '99
 Sandra Taylor
 Vivian Taylor
 Doris E. Teets
 Louis E. Templeton, III '70**
 Christina Terek
 Dorothy L. Thomas
 Harold & Sarah Thomas
 Catherine D. Thompson
 Lloyd & Nancy Thompson
 Bonnie Treiber '69
 Stefanie Trouten
 Ashley Tucker
 Janet H. Tuerff '58**
 S. Michael &
 Romaine '80 Turrentine**
 Carol Lynn Tuttle '65
 Linda D. Tyson '76
 Gilbert C. Ullom, Jr.
 Roberta J. Underdonk '77**
 David '72 & Mary '73 Valles
 Paul D. Van Horn '68
 Dianna Vargo
 Robert J. Varlas '71**
 David Visnic '74
 Dennis & Margaret Vorderburg
 Frank Vorhees '82
 John D. Voyda '67
 Jerry & Nancy Wade
 Marcia Wade '71
 Deanna B. Warco '75**
 Brian L. Warmuth
 Jim & Lynn Watson
 Dona Elane Wayman '51
 Sara Wehr
 Ronald '70 & Shelley '68 Wehrer
 Gary A. Weisner '02
 Arden & Rosalie Welsh
 Loren Wenzel
 Jack West '57
 Mike & Susan '71 West
 Alan K. Wharry '66
 Carrie J. White
 Judith L. White
 Jim & Mary Ruth Whorton
 Lawrence E. Wiedemer '82
 Marlene Wiley '73
 Laurence P. Williams '68
 Weldon P. Williams '95
 James E. Winzenreid '73
 Linda Witt '73
 Ron '92 & Denise '92 Witt
 Ed '93 & Adriana Wolf
 David '79 & Elizabeth '64 Wright**
 Gayla Wright

William Wurtzbacher '70
 Lesley A. Yarkosky '99
 Barbara F. Young '69
 Mike & Connie Young
 Michele Young
 Maureen Zambito
 Judy Zeidler '63**
 Judy K. Zeiger
 Thomas & Trisha Zeiger

**denotes 10 years of consecutive giving

HONORARY GIFTS

Gifts to the Foundation have been made in honor of the following individuals:

IN HONOR OF THOMAS BABB

Peter M. Sontag '69

IN HONOR OF NICK BAKER

Fred & Carol Booth

IN HONOR OF CLYDE D. CAMPBELL '53

John Edgar Smith

IN HONOR OF FRED '64 & JERRY CHAMBERS

Jack C. Adams '63

IN HONOR OF JERALDINE W. DAILEY

Nick & Rowena Baker

Fred & Carol Booth

IN HONOR OF ALFRED R. DE JAAGER

Audrey Ciripompa

Linda Cowan

Gerald de Jaager

Michael Di Clemente '71

Gerald Lucarelli '72

John T. Sedgwick '75

IN HONOR OF JESSE GAGICH '08

Joseph & Susan Dudas

IN HONOR OF JOHN '70 & JUDY '73 HENNEN

Mike & Patty Hughes

IN HONOR OF ELIZABETH R. HUGHES

Mike & Patty Hughes

IN HONOR OF REBECCA ROCKWELL JOHNSTON

Jack C. Adams '63

IN HONOR OF META LASCH '76

Audrey Ciripompa

IN HONOR OF ALICIA SONTAG

Peter M. Sontag '69

IN HONOR OF MELVIN SORKOWITZ '62

Janice & Stanley Susman Family Foundation, Inc.

IN HONOR OF GARY E. WEST '58

Albert Bazo '59

Thais F. Blatnik '76

Donald A. Campese '62

Cattrell Companies, Inc.

James L. Commerci, MD

George Couch

John & Joan Kepner

Jeremy C. McCamic

George Smith '68

John Stimmel & Jo Lynne Nugent-Stimmel '75

Ye Olde Alpha, Inc.

MEMORIAL GIFTS

Gifts to the Foundation have been made in memory of the following individuals:

IN MEMORY OF VIRGINIA JOSEPH ADKINS

John P. Bailey

Cynthia L. Bonafield

William & Doris Boocock

Robert E. Brossman

Clyde '53 & Joan '62 Campbell

Victor Canestraro

Audrey Ciripompa

William & Virginia Crowl

Brett Eckley

Dr. & Mrs. Adel E. Frenn

Lois Hartenstein Family

Robert '64 & Cheryl '78 Joseph

Sharon S. Joseph

Patricia V. Kutsch

Gregory A. Lacy

LJS Reporting

Robert L. Lynch

Nellie Thomas Magyar '50

Roma Lee McConnell '81

Lucille M. Riley

Jack, Charlie & Savage Family

Robert '58 & Jeanne Schramm

Peter C. Schuetz '75

Patricia Shivlin '73

Dave & Debby Stauver

Thomas & Ann Thomas

Jerry & Nancy Wade

IN MEMORY OF BESSIE MARGARET ANDERSON-MILLER '32

Cynthia Goad

Margaret Anne Mayerich

IN MEMORY OF ADAM ANGEL '68

Ed Angel

Cecelia Boyd

Joshua & Emily Brown

Jack & Cheryl Frost

Alicia Koloski

Jenna Koloski Miller

Howard & Teresa Neibert

Ruth M. Nicol

Michael '69 & Cherry '68 Pivik

RPM Industries, LLC

Olga J. Slenska

Barbara A. Wall

IN MEMORY OF CHARLES "NICK" BAKER

Jules & Cathy Adam

Carole J. Adams

Greg & Eshter Avdakov

Gerald Baker

Rowena Baker

William & Hazel Barhorst

Laura Barry

Rick & Laura, Alyssa & Ryan Beight

Paul & Kathy Boron

Joseph & Joan Boutaugh

MEMORIAL GIFTS, CONTINUED

IN MEMORY OF CHARLES "NICK" BAKER

continued

Hollie Buchanan
 Judy E. Carney
 Fuhua Chen
 William & Margaret Christopher
 Norman & Jeanetta Clampitt
 Ernest & Maureen '74 Comiskey '74
 Jenna Cook
 Chuck '66 & Linda '87 Cornell
 Richard & Ellen Daleke
 Rebecca L. Daniel
 Richard & Marion Deever
 William & Nancy Deibert
 Kevin & Patty Duffin
 Timothy & Marjorie Easton
 Richard '64 & Patricia Edge
 Bonnie Ellis
 Jeanne H. Finstein
 James '61 & Carol '60 Frum
 John & Priscilla Gompers
 Gene & Jan Haberman
 Elizabeth B. Holden
 Janet L. Honecker
 Nadia & Zack Iwanyshyn
 John & Janet Jackson
 Michael '68 & Janet Joseph
 Jason & Sarah Koegler
 Robert & Melinda Kreisberg
 Bob & Judy Langkamer
 David & Marie Linden
 Doug Macy
 Henry R. Marockie '61
 Kay H. Martin
 Roger A. Matz
 Janice K. Maxson
 Jeremy C. McCamic
 Nancy McCord '66
 John P. McCullough
 Roger & Jane McLean
 Douglas '70 & Rebecca '62 Merritt
 Tom, Elizabeth & Olivia Miramyer
 Linda Morrison ' 84
 Elizabeth A. Narrish
 Howard & Teresa Neibert
 Jacinda M. Oberdick
 Ohio Valley Board of Approved Umpires
 Thomas P. Pasco '98
 Megan D. Phillips
 Martin & Norma Price
 William & Mary Putnam
 Raymond James Financial Services, Inc.
 Robert J. Reeves '61
 Bonnie Ritz '75

Bob & Anne Robinson
 Alex & Peggy Salvatori
 William '69 & Linda Sandiford
 Gerald & Carla Saul
 Robert '58 & Jeanne Schramm
 Gary & Deborah Seldomridge
 Hong Il Seung
 Ruth Ann Simms
 George Smith '68
 Earl & Emily Sorrell
 Chuck & Nancy Spohn
 Martha L. Strasser
 Stella Strickling '75
 Lloyd & Nancy Thompson
 Dianna Vargo
 Wednesday Night Bridge Club
 Arden & Rosalie Welsh
 Mike & Susan '71 West
 West Virginia State Math Field Day
 Organization
 Scott '75 & Joanne Winters

IN MEMORY OF JOSEPH A. BARTELL

Andrew J. Mesaros '43
 Andrew '54 & Judith Bartell '55 Paesani

IN MEMORY OF NELSON CAIN

Rowena Baker
 David & Amelia Brooks
 Reed '70 & Beverly '90 Burke
 Patricia J. Byrd '75
 Clyde '53 & Joan '62 Campbell
 Robin & Saun '97 Capehart
 Christine Carder '72
 Joe & Sandy Cartisano
 Chesapeake Energy Corporation
 James '74 & Sharon Clark
 Scott A. Cook '89
 Joanna J. Cover '70
 B. A. Crawford
 Sue A. Crolley
 Sandra E. Czernek
 Jo Ann DeWitt '86
 Dave & Mary Ann Edwards
 James '61 & Carol '60 Frum
 Nelson & Bonnie '97 Gilbert
 John W. Hattman
 John '70 & Judy '73 Hennen
 Travis P. Hinkle '07
 Thomas A. Hostutler
 Jeff & Linda '90 Knierim
 Robert & Melinda Kreisberg
 Michael J. Marshall
 John P. McCullough

Linda Jones McKee
 Johanna H. Meissner
 Herb '89 & Ashlea '04 Minch
 Carl '01 & Stephanie North
 Gerald & Edith Perry
 Elizabeth J. Reinhardt '07
 Karen A. Rychlewski
 Jim & Charlene Stultz
 Jim & Lynn Watson
 Laurence P. Williams '68
 Randy & Betty Worls

IN MEMORY OF GREGORY L. CARDAMONE '87

Louis '65 & Darlene '61 Cardamone

IN MEMORY OF LEONORA CAYARD

Thais F. Blatnik '76

IN MEMORY OF CHARLES DAVIS III '80

Charles '57 & Madona Davis
 Jeffrey '86 & Mariann '84 Davis

IN MEMORY OF ELMER DIETZ

Shirley Ann Dietz

IN MEMORY OF WILLIAM J. DOLAN '75

John '78 & Kimberly '77 Dolan

IN MEMORY OF ROBERT GODFREY

Donelda J. Godfrey

IN MEMORY OF BETTIE JEAN STEWART HOOD

Jessica Baker
 Peter '88 & Erin Cuffaro

IN MEMORY OF JOHNNIE ARTHUR FRANCES KERNS

Brenda K. Womack

IN MEMORY OF MARTHA KIGER

Harlan & Jeanne Carter
 M. Kathleen Dougherty
 Dale & Gladys Ennis
 Ben & Lynne Exley
 Mr. & Mrs. Jospeh A. Gompers
 Green Acres CEOS
 Charlie & Maria Hitson
 Barbara A. Kegelmeyer
 Ruth Lemley
 Ken & Gay Mays
 Roma Lee McConnell '81
 John P. McCullough
 Robert & Sue Mendenhall
 William & Joan Mudge
 Andrew '54 & Judith Bartell '55 Paesani

Mary Ann Parker
Maureen T. Sanborn
Corinne Sigley
Catherine D. Thompson
Wheeling Park High School -
Career Technical Department

IN MEMORY OF ROBERT & HELEN LEVENSON
Betty Blum

IN MEMORY OF LARY LOEW '75
Robert E. Clark '00

IN MEMORY OF DOROTHY LONG
Howard & Wendy Long

IN MEMORY OF ELLEN MATTSON
Mary Jo Ficklin

IN MEMORY OF KENNETH B. MCMILLEN
John William Hoppers '63

IN MEMORY OF FORREST L. MELLOTT '42
Virginia T. Mellott '43

IN MEMORY OF CHRISTINE MOROUDAS '72
Janice Irene Manning '72

IN MEMORY OF BECKY BATTISTA NEWSOME '75
Stephen c. Newsome '74

IN MEMORY OF L. A. "LIBBY" ORSINI '49
Debra Agostino
Lois Agostino
Goldie M. Basil '58
Fred T. Chambers '64
Ralph '84 & Tamara '86 Durante
Sally H. Eberhard '78
Nick '68 & Susan '91 Fuscardo
Carmin & Sally Marino
John P. McCullough
Allan B. Rosenberg
Robert '58 & Jeanne Schramm

IN MEMORY OF DONALD L. PAHL, SR. '58
Cindy Stickley

IN MEMORY OF KAREN PANAS '74
Jim & Charlene Stultz
Maureen Zambito

IN MEMORY OF GEORGE & MILDRED POLAK
Ihor & Catherine Hlohowskyj

IN MEMORY OF DON L. SEAMON
Samuel L. Seamon
Shirley A. Seamon

IN MEMORY OF JAN PELAEZ TAYLOR '76
Kenneth Allen
Cathy J. Aston
Mark & Vicki Battista
Tamella J. Border
Jane E. Bragg
Mary J. Capehart
Jamie H. Carmosino '69
Ric, Terri, Micah & Tannor Chamberlain
Susan R. Durig '75
Susan Forrester '76
James C. Gardill '68
Garry L. Lewis DDS, Inc.
Dana '72 & Sharon '72 Garten
Larry & Lisa Goodnight
Grisell's Funeral Home & Crematory
John & Joan Holman
Donald & Yvonne Holstine
Evelyn C. Lady
Robert J. Lo Castro
Darlene Meeker '75
Moundsville Baptist Church - Emmanuel Class
Moundsville Baptist Church - Maranatha Class
Stacey J. Ovies
Joe Pelaez
Richard Pettit
Jo Pilette
Alice June Poling
Gary Rexroad
Larry & Jana Rine
Bernadine V. Rodriguez
Joseph & Jane Sandrick
Reynold & Jody Scarnecchia
Edward & Jean Sherman
Norma Glover Sine
Mary C. Stiltner
Jim & Charlene Stultz
Edward F. Suter '70
Allen & Bobbi Taylor
Sandra Taylor
Virginia B. Taylor
Vivian Taylor
Tri State Dental Hygienist Association
Valley View Farm/Metal
Jerry & Nancy Wade
Jim & Mary Ruth Whorton
James S. Wilson
Linda Witt '73
WSB Rehabilitation Services, Inc.
George & Vicki Yocum

IN MEMORY OF CLYDE THOMAS '70
Roslyn Lando '86
Scott A. Cook '89

IN MEMORY OF THOMAS TIGHE '63
Jack C. Adams '63
John P. McCullough
Mary Alice Tighe '56

IN MEMORY OF ROBERT VILLAMAGNA, JR.
American Plate Glass Inc.
Paul & Patricia Baronak
Jon & Jessica Bedway
Julie B. Blust '02
Owens Brown '74
R. Curtis '81 & Christin Byrum
Richard H. Carter
James L. Comerici, MD
David & Elizabeth Delk
Michele Ellis-Thomas
Matthew Harder
Highland Springs Farm
Bill & Susan Hogan
Laura Kuhns
John P. McCullough
Jean Och
Oglebay Institute
Alan & Barbara Ruben
Geoffrey & Rosemary Ruben
James & Susan Simpson
Jim & Charlene Stultz
Nancy E. Tirone
Paul T. Tucker
Judith L. White

IN MEMORY OF RICHARD WEHR
Sara Wehr

IN MEMORY OF ROLAND "ROLLIE" WILLIAMS
James Taibi '86 & Kristina Williams '86

IN MEMORY OF KENNETH P. WRIGHT
William C. Wright '64

CORPORATE MATCHING GIFT PROGRAM

Gift commitments between July 1, 2012 – June 30, 2013

A growing number of alumni and friends of West Liberty University have furthered their gifts to the University by participating in matching-gift programs through their or their spouse's employer. During the 2012-2013 annual campaign the following companies made commitments through their matching-gift programs:

American Electric Power**

Bridgestone Firestone Trust Fund**

Bristol-Myers Squibb Foundation, Inc.

Cardinal Health Foundation Inc.

Diebold Foundation

ExxonMobil Foundation

Federal Home Loan Bank of Pittsburgh

JPMorgan Chase Foundation

Nationwide Foundation**

Pfizer, Inc.**

State Farm Companies Foundation**

The Bechtel Foundation Matching Gifts Program

The P & G Fund

The Progressive Insurance Foundation

Verizon West Virginia

W. W. Grainger, Inc.

Wells Fargo Foundation Educational Matching Gift Program

Thank You...

CORPORATIONS, FOUNDATIONS & ORGANIZATIONS

Corporations, foundations and organizations that select West Liberty as a recipient of their philanthropy are making a decision that provides real benefit to the community. These benefits go beyond the knowledge that they are doing something positive for the community: they are having a genuine impact on the future of West Virginia and the region.

Anonymous (2)	Frontier Communications	Ohio Valley Surgeons, Inc.	TJ's Pre-Owned Auto
A Bail Bonding by Suter's	Garry L. Lewis DDS, Inc.	Original DiCarlo's Pizza	TJ's Sports Garden & Restaurant
AAA Homes	Generations Restaurant & Pub	Pentino Dental	Touchstone Research Laboratory
AAA Wheeling	Gentle Dental Care	Perfido Weiskopf Wagstaff + Goettel	TRF Insurance, LLC
Abraham & Company, PLLC	Green Acres CEOS	Perkins Restaurant & Bakery	Tri State Dental Hygienist Association
Advantage Payroll Services	Grisell's Funeral Home & Crematory	Pines Charter Lady Jags Booster Club, Inc.	United Bank, Inc.
Alpine Ski's & Boards LLC	GSK, Inc.	Pitts. Conf. on Analytical Chem. & Applied Spectroscopy**	USA Today High School Sports
Altmeyer Funeral Homes	H & H Builders	Prezkop - Chappelle & Associates AC**	Valley View Farm/Metal
AM 1600 WKX & AM 1370 WVLY	Hampton Inn - Wheeling	Progressive Bank	Vance Printing & Graphics LLC
American Plate Glass Inc.	Hazlett, Burt & Watson	Project BEST**	Victor Canestraro DDS
Ancient Order of Hibernians of America	Hendrickson & Long PLLC	Protestant Ministry Committee	Vision Shared, Inc.
Barnes & Noble Bookstore #427	Highland Springs Farm	Radiology Associates, Inc.	Washington/Greene County Dental Society
Barnes & Noble College Bookstores**	Highmark West Virginia	Raymond James Financial Services, Inc.	WCHS-TV
Bayer Foundation	Hill International Trucks, LLC	Riesbeck Food Markets, Inc.	WesBanco Wheeling
BB&T	J Martin Golf LLC	Riverbridge Wealth LLC	WesBanco, Inc. - Trust Department
Bob Evans Restaurant	Janice & Stanley Sussman Family Foundation Inc.	RJW Global Trade Group	West Liberty University Research Corporation
Bordas & Bordas , PLLC	Jividen Law Office, PLLC	Robert E. Jones MD	West Virginia State Math Field Day Organization
Boyd Hall Staff	JMS Digital	Rohrig Heavy Equipment Maintenance LLC	Wheeling District Dental Society
Carey Strategic Communications	Job Research, LLC	Roofing Supply Group of Pgh Inc.	Wheeling Park High School - Career Technical Department
Cattrell Companies, Inc.	John C. Shaw Scholarship Fund**	Rotary Club of Weirton Heights	Wheeling Renal Care
Chesapeake Energy Corporation	KATKO, Ltd	RPM Industries, LLC	Wheeling Softball Umpires
Chris Hess Foundation	Kepner Funeral Homes	S.R. Snodgrass, A.C.	WLU Alumni Homecoming Queen Group
Civitan Club of Wheeling Inc.**	Lamar Outdoor Advertising	Savage Construction Co.	WSB Rehabilitation Services, Inc.
Claude Worthington Benedum Foundation**	Liberty Grocery	Scanmark Ltd	WTRF, Fox Ohio Valley & ABC Ohio Valley
Coastal Jaw Surgery of New Port	Liberty Tavern	St. Clairsville American Legion Post 159	WV Department of Education & The Arts
Richey DBA Mosaic	LJS Reporting	St. Clairsville Eagles Aerie 2541	Ye Olde Alpha, Inc.
Coca-Cola Bottling Company	Lynn Buch Interiors	Starvaggi Charities, Inc.	Zeiger Industries
Collegiate Alumnae of Wheeling**	Main Street Bank	Steubenville Veterinary Hospital	
Comcast Spotlight	Maple Leaf Family & Sports Medicine, LLC	Swisher International, Inc.	
CONSOL Energy	McKinley Carter Wealth Services	Taylor-made Printing Systems	
Costanzo & Associates, PLLC	MedExpress Urgent Care	The Albert Schenk III & Kathleen H. Schenk Charitable Trust	
Certified Public Accountants	MetLife	The Chester Lumber Company	
DeFeliceCare, Inc.	Miklas Meat Market	The Cornerstone Group	
Diamond Queens	Miller Family Fund**	The Louis & Sandra Berkman Foundation**	
Direct Online Marketing	Mona Lisa Communications, LLC	The Nutting Foundation	
Drover's Inn, Inc.	N.F. Mansuetto & Sons, Inc.	The Ryan Ferns Healthplex	
Eagle Manufacturing Co.	Nello Construction	TIAA-CREF Financial Services	
Edgar Martin Classic**	Oglebay Institute		
EM-Media	Ohio Valley Board of Approved Umpires		
Etzel Internal Medicine, PLLC	Ohio Valley Industrial & Business Development Corporation		
Flying S Wings Inc.	Ohio Valley Medical Center		
Franks Hair Quarters			

** Denotes 10 years of consecutive giving



CREDITS

Editor
Maureen Zambito, Director of Media Relations
Creative Director
Whitney Inkster, Director of Creative/Webmaster
Contributor
Don Clegg

WEST LIBERTY UNIVERSITY ALUMNI & FRIENDS NEWSLETTER

top of the hill

SPECIAL EDITION: Benefactors Report

Topper **SPOTLIGHT**



READ MORE ABOUT FEATURED ALUMNI AT
westliberty.edu/toth/spotlight



DONALD BRUNO '52

Don Bruno enlisted in the U.S. Air Force and worked his way up to Director of the 564th Air Force Band and Supervisor of all TAC Bands worldwide! He then followed this military career with just as impressive civilian work as a teacher, band director, principal, superintendent and college faculty member. This remarkable alumnus has even penned a biography now selling on Amazon.



JOANNE MONFRADI DUNN '78

JoAnne Monfradi Dunn rose to the top in the highly competitive world of marketing. Her passion lies in innovation. Time Life, the Norman Rockwell Museum, Mal Dunn Associates and TC Index were some of her stops along the road to success. In 2002, she founded Alliant, an database services company. Most recently she was unanimously elected as the Chairman of the Board for Direct Marketing Association!



CHERYL NOLL '81

Cheryl Noll has reached the rank of college dean and earned the respect of her peers thanks to her tireless work in higher education. Her outstanding teaching, leadership and vital contributions to her 23-year employer, Eastern Illinois University, has recently been enhanced by her new position, announced this fall, as Dean of the College of Business, South University.